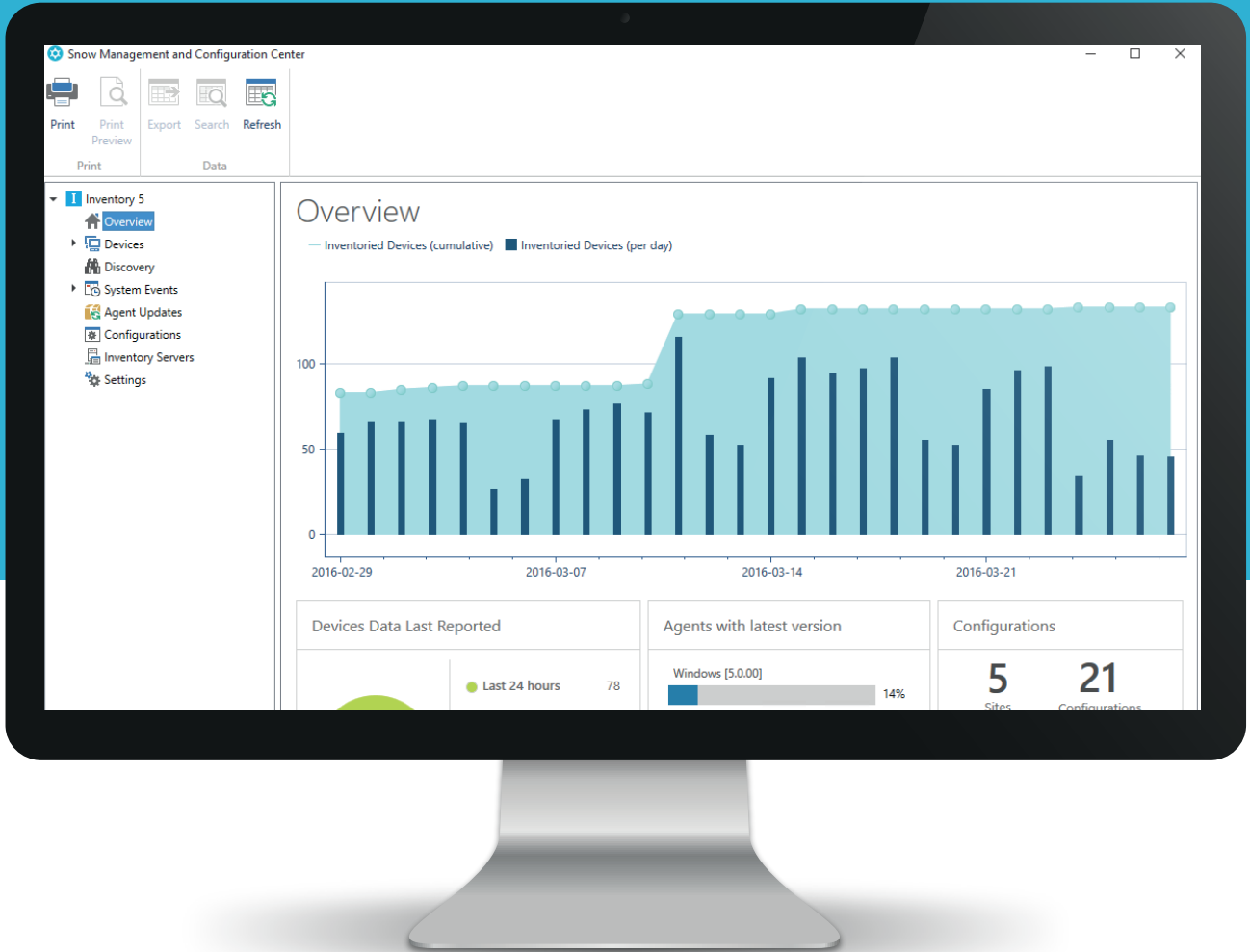


Inv

Snow inventory



Snow Inventory delivers a clear and accurate view of the hardware devices and software assets deployed across multi-platform, multi-site networks.

Inv

Managing the cost, availability and risks associated with IT assets rests on the ability to accurately discover and identify all hardware, software, and, especially, cloud resources across the entire IT estate, regardless of platform, provider or location. Snow Inventory provides a single source of truth for IT assets on all major enterprise computing platforms, including Windows, Mac, Linux, Unix and mobile devices, with support for all common virtualization technologies and cloud resources.

Whether you work in IT Operations, IT Service Management or SAM, Snow can shine a light on all hardware, devices, cloud resources and software assets. Snow Inventory discovers all assets including hardware configuration, cloud subscriptions, software deployments with detailed usage reporting. This insight gives stakeholders such as Software Asset Management, IT Asset Management, Service Desk, Security and IT Operational teams the information they need at a granular level to feed critical business decisions. For ITAM and SAM teams, Snow Inventory automatically integrates with Snow License Manager to turn raw audit data into actionable SAM intelligence.

DISCOVERY

To achieve Software License Optimization, the ultimate goal of Software Asset Management, there are a number of steps and processes along the way, the first of which is data collection – platform, device and application discovery. Not merely finding your known assets but knowing the unknowns is critical for knowing what to manage. Snow Inventory discovers devices, applications and cloud resources as well as revealing the blind spots on the network.

INVENTORY

With an ever-changing IT landscape and the fact that up to 50% of IT spend is beyond control of the IT department, it is imperative that the organization is able to inventory all discovered assets across the network to mitigate risk. Snow Inventory acts as a central hub for its own discovery of software, cloud resources and connected network equipment, as well as pulling in discovery data from any source using Snow Integration Connectors.

MEASURE USAGE

Snow Inventory Agent:

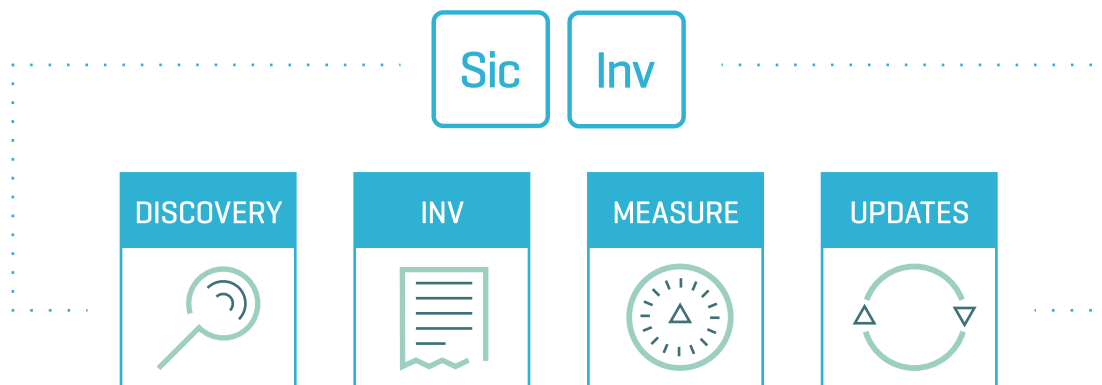
- Automatically collects usage information on all applications running on desktops including virtual desktops

- Discovers and meters SaaS applications
- Discovers and inventories Virtual Machines running in public clouds such as Amazon Web Services and Microsoft Azure
- Tracks datacenter applications such as Citrix and Microsoft RDS.

This high quality data is used in Snow Licenses Manager to identify areas of cost optimization and license harvesting as well as generate management reports on usage for all applications.

UPDATES

It's no surprise in today's fast moving agile world that inventory data can quickly go out of date. Technology changes, especially with the rapid and easy deployment of cloud applications and resources, vendor licensing and delivery mechanisms change continuously and in order to be proactive with your SAM program you need the ability to quickly adapt the inventory gathering processes. Inventory configurations in Snow are fully automated and new versions of Snow Inventory Agents are automatically downloaded so that updates can be easily and quickly distributed to the full estate, offering complete change management control to avoid time-consuming agent rollouts.



BUSINESS BENEFITS AND KEY FEATURES

DISCOVERY

Essential to SAM is to discover every device, application and cloud resource in the estate that consumes software. Snow Inventory provides complete asset discovery as well as revealing the blind spots on the network. From computers to servers, mobile and tablets to all connected network devices such as routers, printers, and firewalls, all device types are discovered and reported in Snow. Even devices that are not connected to the network at point of audit are included, as are devices with no client agent on them. Software, whether in the cloud or on-premise, is detected and reported, with valuable details around version, patch and usage that enable decision makers to gain further business benefits.

AUDIT DATA AND MANAGEMENT REPORTING

With near real-time information about the hardware, software, and cloud resources across the entire estate, Snow Inventory provides the detailed analytics necessary to create realistic plans and future budgets based on actual usage and real needs beyond the traditional boundaries of Software Asset Management. For example, it feeds Snow License Manager with up-to-date hardware and software information that can be integrated with helpdesk and ITSM solutions such as ServiceNow.

EXHAUSTIVE TECHNOLOGY COVERAGE

Snow Inventory gathers information from clients with operating systems ranging from Windows 95 to Windows 10, as well as Mac OS X, Red Hat, Debian, Ubuntu, Oracle Enterprise Linux, AIX, Solaris and HP-UX and it supports Android, iOS and Windows devices.

DATACENTER CONFIGURATION TRACKING

Snow Inventory provides audit information at all layers. Using Snow's Virtualization Management Option, not only does Snow Inventory establish relationship between servers in datacenter clusters, it can also establish relationships between the virtual machines and host devices. Furthermore, Snow Inventory can highlight potential risks in terms of non-inventoried virtual machines through its discovery capability. As an optional addition, using the capabilities of Oracle Management Option, Snow Inventory can gather information on Oracle databases, options and management packs. Snow Optimizer for SAP also provides detail around utilization and licensing to optimize configuration and license costs, and identifies risks like indirect usage.

OPTIMIZATION OF CLOUD-BASED APPLICATIONS

Snow Inventory enables organizations to proactively track the usage of cloud services, from subscriptions like Office 365 and Salesforce, to Infrastructure as a Service such as AWS and Azure. Providing detailed information on user, application and resource-level. Increasingly, business units are purchasing and deploying cloud resources without IT having visibility – increasing over-provisioning, over-consumption and risk of non-compliance for the organization. Snow Inventory automates the discovery, reconciliation of licensing and provides detailed analytics into utilization of cloud resources.

MULTIPLE VIRTUALIZATION TECHNOLOGIES

Snow Inventory tracks virtualization across the desktop and in the datacenter. It inventories multiple virtualization technologies, including Microsoft (Hyper-V, RDS and App-V), VMware (vSphere, Horizon View and ThinApp), Citrix (XenServer and XenApp) and Red Hat Enterprise Virtualization. Configuration data from the hosts and guests

can be automatically reconciled in Snow License Manager to ensure compliance with hardware configuration-related software licensing requirements.

ACCURATE AND DETAILED INVENTORY

The combination of hardware inventory, software and cloud inventory and software metering that Snow Inventory provides delivers the ability to browse, discover and track all software. Its accuracy and completeness provides the foundation for Snow's Software Recognition Service to perform high quality normalization – filtering out irrelevant records and determining publisher and product names, versions and editions. Detailed insight into installations and configurations enables organizations to identify areas for optimization.

SECURITY AND COMPLIANCE

Snow Inventory sends data from clients to server over HTTPS or to a file share. The data transmitted is secured with a 128-bit encryption and communication is done over HTTPS with an SSL certificate. Full support for PKI and the ability to use customer-created certificates to encrypt and secure the communication. The information collected includes status of service packs, antivirus definitions as well as details on potential unwanted software, making it easy to check that security policies are being complied with.

EASE OF DEPLOYMENT AND TRANSPARENCY

The Snow Inventory client is easy to deploy using a built-in system or a deployment system of choice. With zero impact to user productivity, Snow Inventory enables scanning with no agent installed, or it can be installed as a service to enable real-time application and user-level usage reporting.

MOBILE INVENTORY

Organizations can use Snow Inventory technology or leverage their existing mobile inventory solution, such as an MDM/EMM solution, to feed information into Snow License Manager on all Android, iOS and Windows mobile devices. This includes information such as hardware details, software details, owner of the devices and installed applications.

ANALYST VIEW

Inventory is the first building block of ITAM, and auto-discovery is the first building block of inventory... Once you collect inventory data, you must include and analyze this data along with all associated asset data for potential improvements. Source: Source: Forrester Inc. Best Practices: IT Asset Management: Best Practices To Use For Starting Or Renewing Asset Management Programs. February 12, 2014. Analysts: Amy DeMartine with Eveline Oehrlich, Michelle Mai.

TRACKING SOFTWARE USAGE

Each software installation or subscription is monitored to determine usage. By measuring usage through collection of raw metering information, Snow Inventory provides organizations with detailed intelligence to drive software harvesting programs and ensuring that license utilization is optimized.

Examples:

If usage patterns indicate users only need Office 365 E1 though they are licensed for E5; the SAM manager can investigate reducing subscriptions for a group of users. –Alternatively, if high levels of usage are found then it's important that the right license agreement is assigned, such as moving from individual licenses to an enterprise-wide agreement.

Slm

Snow license manager

With millions of licenses sold, Snow License Manager is the world's leading SAM solution.

Inv

Snow inventory

The true multi-platform audit solution designed to find devices, audit software installs and track usage.

Srs

Software recognition service

Recognize commercially-licensable applications across the network.

Sic

Snow integration connectors

Integrate Snow's SAM platform with existing Inventory, ITAM and Service Management solutions.

Om

Oracle management option

Cut the costs of managing complex Oracle licenses.

Sos

Snow optimizer for SAP® software

Manage SAP licensing to optimize one of the enterprise's largest software costs.

Vm

Virtualization management

Identify and manage virtual assets across the network.

Ap

Snow automation platform

Define and implement automated process to support software optimization.

Sdm

Snow device manager

A complete enterprise mobility management solution that handles the full lifecycle of mobile devices.

ANALYST VIEW

Inventory is the first building block of ITAM, and auto-discovery is the first building block of inventory... Once you collect inventory data, you must include and analyze this data along with all associated asset data for potential improvements.

Source: Forrester Inc. Best Practices: IT Asset Management: Best Practices To Use For Starting Or Renewing Asset Management Programs. February 12, 2014. Analysts: Amy DeMartine with Eveline Oehrich, Michelle Mai.

ABOUT SNOW SOFTWARE

Our Mission: Stop organizations paying too much for the software & cloud services they consume.

Whether it's through lack of control, lack of understanding or lack of compliance, Snow (www.snowsoftware.com) believes that most organizations today end up paying too high a price for their software.

Headquartered in Stockholm, Sweden, with European headquarters in Bracknell, UK and US headquarters in Austin, Texas, Snow Software is the largest dedicated developer of Software Asset Management (SAM) solutions, designed to ensure that the \$351 billion spent in 2017 on enterprise software is money well spent – ensuring organizations have the appropriate licenses for the software they use – not too many, not too few.

With more local offices and regional support centers than any other SAM solutions provider, more than 4,500 organizations around the world rely on Snow Software's on-premise and cloud-based SAM solutions to manage software licensing across more than 11 million devices, from mobile to desktop, data center to the cloud.

info@snowsoftware.com

Copyright ©2017 Snow Software AB, All Rights Reserved.
201605(4)