

USER GUIDE

Product	Snow Inventory Data Receiver
Version	2.1
Release date	2013-04-26
Document date	2016-01-07

CONTENT

ABOUT THIS DOCUMENT	3
PREREQUISITES	3
INSTALLATION.....	4
COMPLETE THE INSTALLATION	7
CONFIGURATION.....	8

ABOUT THIS DOCUMENT

This document describes how to install Snow Inventory Data Receiver 2.1.

PREREQUISITES

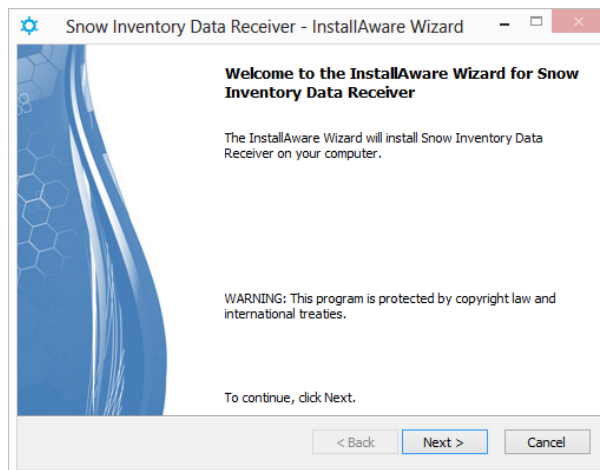
Very important! Please read before beginning the installation.

- Verify that the server meets the system requirements for this product; see the document ***System Requirements for all Snow products***, which is available for download at www.snowsoftware.com.
- Verify that ASP.NET 3.5 is installed:
 - The role **Application Server** must be installed.
 - The role **Web Server (IIS)** and the role service **Application Development** with all features must be installed.
- If IIS is used for hosting other web applications, have a web hostname or a specific port to assign the Snow Inventory Data Receiver website after installation. The Snow Inventory Data Receiver website will have to be started manually.
- Upgrading a previous version:
 - All previous versions of Snow Inventory Data Receiver must be uninstalled before the upgrade. Uninstall using the Windows Control Panel.
- Start the setup with the **Run as administrator** option.

INSTALLATION

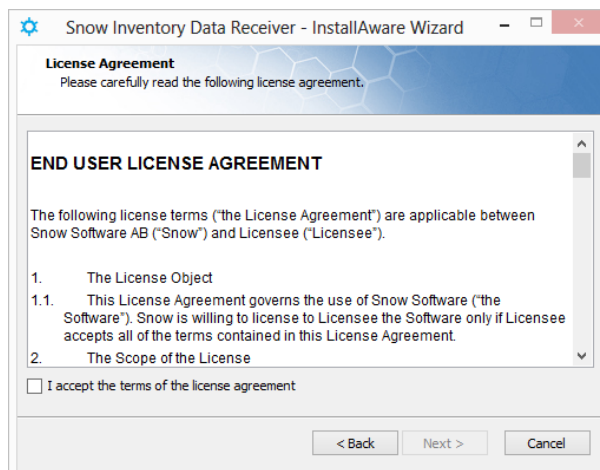
Start the setup by using the file **SnowIDRSetup.exe** with the **Run as administrator** option.

1. The installation wizard for Snow Inventory Data Receiver is started.



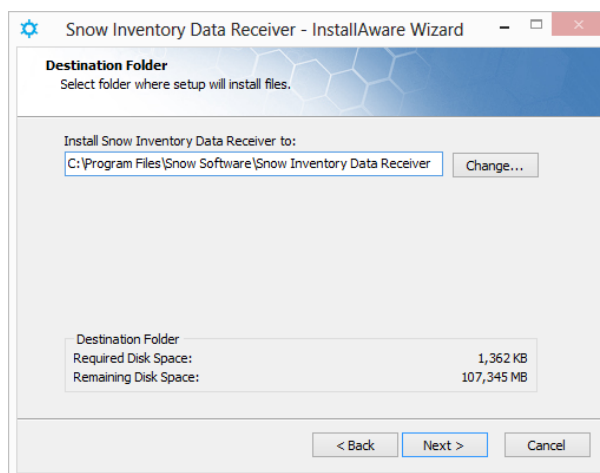
2. Click **Next**.

3. Read and accept the terms of the **End User License Agreement**.



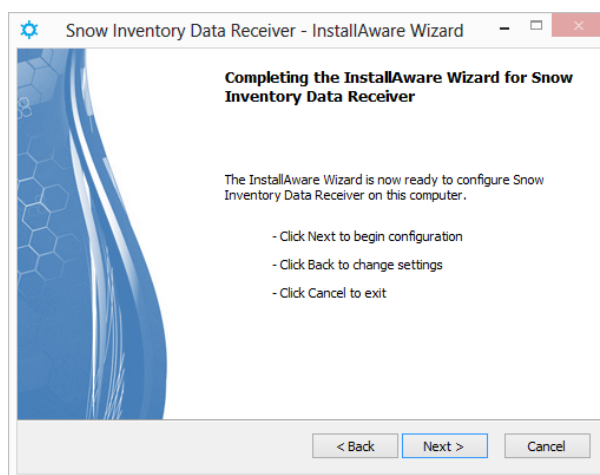
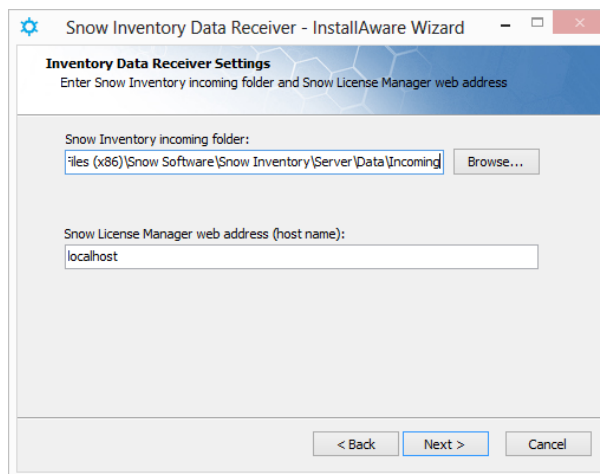
4. Click **Next**.

5. Select destination folder for the Snow Inventory Data Receiver installation.

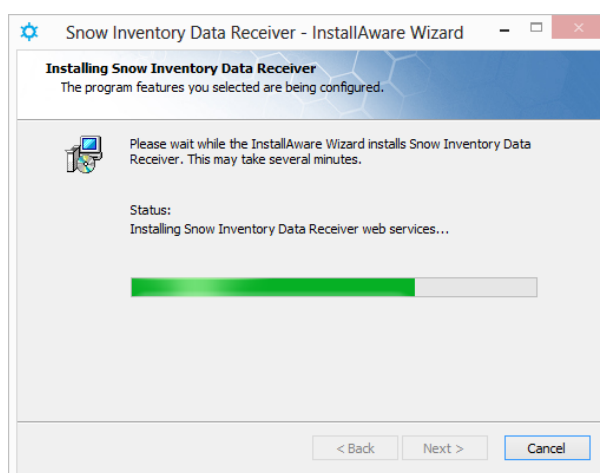


6. Click **Next**.

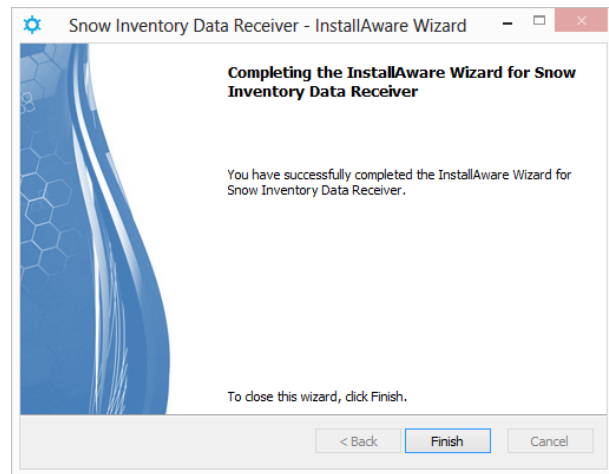
7. Specify the folder where the IDR will put incoming inventory files on the Snow Inventory Server.
8. Specify host name of the Snow License Manager website (or the host name that is planned to be used). The host name is required for Web application metering, which is configured in the Snow License Manager Web user interface, and distributed to the Inventory clients via the IDR.
9. Click **Next**.
10. Click **Next** to start the installation.



11. The Snow Inventory Data Receiver is installed.



12. Click **Finish** to exit the installation wizard.



COMPLETE THE INSTALLATION

1. Open MMC (Microsoft Management Console) module for Internet Information Services.
2. Select Web Service Extensions.
3. Make sure that the following web service extension is allowed on the server:
 - ASP.NET
4. If a hostname is not used for identifying the website (i.e. www.myserver.com), any websites on the server that are using TCP port 80 need to be stopped, or another port needs to be selected for the Snow Inventory Data Receiver. If more than one website is planned to be used on the server it's highly recommended to use hostnames for each website.
5. Close the MMC module.

CONFIGURATION

Double-click on the file **IDRConfig.exe** (default installation folder is **C:\Program files\Snow Software\Snow Inventory Data Receiver\Config**).

Incoming folder for Inventory files

Select the **Folder** where the IDR will put the inventory files (.inv).

Incoming folder for XML files

To receive XML files, enable the option **Allow XML file transfers** and select the **Folder** where the IDR will put the XML files (.xml).

Security

For remote incoming folders (for example on shared storage solutions), enable the option **Use network credentials when connecting incoming folder(s)**. Enter information on **Domain**, **User name** and **Password**.

Other settings

In the communication with the IDP the clients (Windows, Linux and Mac OS clients) include a security token when a connection is established. Enable the option **Use token validation** to implement validation of this security token.

NOTE: For Unix clients this option must be disabled, since they don't generate security tokens.

In the **SLM endpoint** textbox, enter the address to where the IDP will get configuration updates on which web applications to meter.

